

**Product:** Buddy System 120  
**Description:** Full spectrum whole plant CBD infused coffee beans  
**Unit Size:** 12 oz  
**Serving Size:** 8 oz Cup of Coffee

**Harvest Source:** Vermont, USA  
**Cultivar:** Blend  
**Batch ID:** 001CBD120

Quality	Method	Specification	Result	
<b>Total CBD:</b>	C5210-HPLCUV (Internal)	> 240 MG	<b>139</b>	PASS
<b>Total THC:</b>	C5210-HPLCUV (Internal)	< 0.3 %	<b>&lt;0.05</b>	PASS
<b>Appearance:</b>	ASTM E1627 - 11	Coffee Beans		PASS
<b>Odor:</b>	ASTM E1627 - 11	Aromatic, rich		PASS
<b>Total Terpenes:</b>	C5933-GCMS (Internal)	Detectable (PPM)	8	PASS
<b>Minor Cannabinoid</b>	C6198 LCMSMS (Internal)	Detectable (MG)	6	PASS
Safety	Method	Specification	Result	
<b>Water Activity</b>	D8196-18	Not Tested		
<b>Solvents:</b>	C5923-GCMS (Internal)	USP 467		PASS
<b>Pesticides:</b>	MCR-TM-0009 LCMSMS	MDH Exhibit 5		PASS
<b>Mycotoxins:</b>	MCR-TM-0013 LCMSMS	MDH Exhibit 6		PASS
<b>Heavy Metals:</b>	MCR-TM-0008 ICPMS	MDH Exhibit 4		PASS

Product of Vermont USA



Test Method: C5210 HPLC-UV (Internal)

Test Method: C5210 HPLC-UV (Internal)

Terpene Profile	Parts Per Million	Parts Per Million	Cannabinoid Potency	MG Per Unit	MG Per Serving	
a-Pinene	<2	Isoborneol	<2	CBD	139.5	6.34
Camphene	<2	Menthol	<2	CBDA	<50	<1
Sabinene-	<2	endo-Borneol	<2	d9-THC	<50	<1
b-Pinene	<2	a-Terpeneol	<2	THCA-A	<50	<1
b-Myrcene	<2	g Terpeneol	<2	d8-THC	<1	<0.02
a-Phellandrene	<2	Nerol	<2	CBG	5.23	0.12
Carene	<2	Pulegone	<2	CBGA	<1	<0.02
a-Terpinene	<2	Geraniol	<2	CBN	<1	<0.02
D-Limonene	<2	Geranyl acetate	<2	CBNA	<1	<0.02
o-Cymene	<2	a-Cedrene	<2	CBC	1.18	0.03
Eucalyptol	<2	(E)-b-Famesene	<2	CBCA	<1	<0.02
b-Ocimene	<2	Caryophyllene	4	CBDV	<1	<0.02
gTerpinene	<2	a-Humulene	3	CBDVA	<1	<0.02
Terpinolene	<2	trans-Neradiol	<2	THCV	<1	<0.02
Sabinene Hydrate	<2	cis-Neradiol	<2	THCVA	<1	<0.02
Fenchone	<2	Valencene	<2	CBL	<1	<0.02
Linalool	2	Guaiol	<2			
Fenchol	<2	Caryophyllene Oxide	<2			
Isopulegol	<2	Cedrol	<2			
Camphor	<2	a-Bisabolol	<2			

**Recommended Storage:** See product packaging  
**Retest Date (CBD Potency):** 1-Apr-20  
**Product Information:** See product panel for details.

Approved By:



Representative: Keith Griswold, MS

Title: Chief Scientific Officer

Date: 11-Jun-20

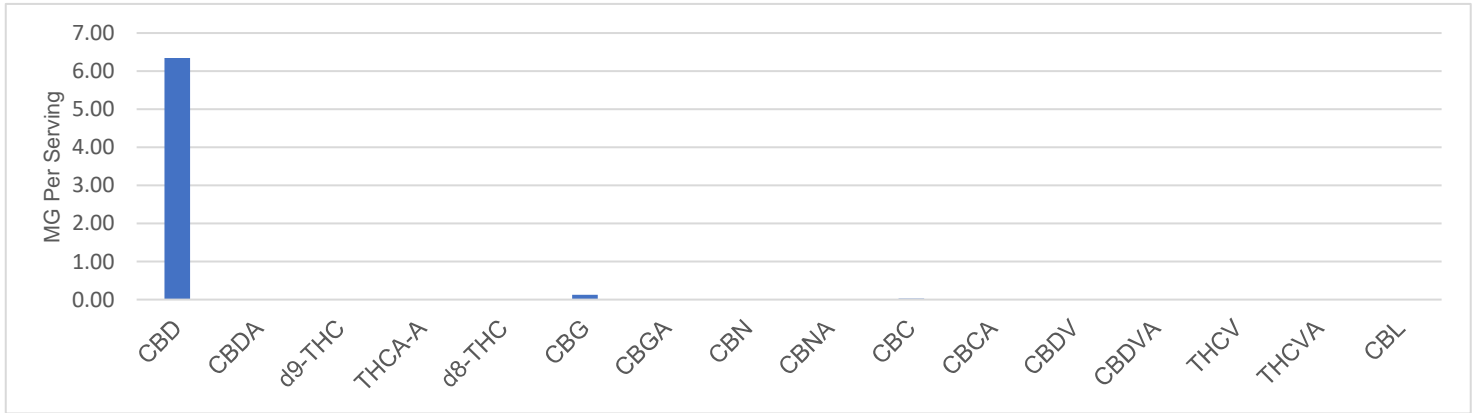


Data reported in this document pertains only to this batch and as sampled according to QMT.PLN.01.03. All rights are reserved to the producer and distributor of this product. Unauthorized reproduction of this data is prohibited. All testing is performed with internally developed test methods that have been verified or validated in accordance to AOAC and ICH guidelines. Test method performance is monitored through control charting.

**Batch ID:** 001CBD120

**Parameter:** Cannabinoid Potency

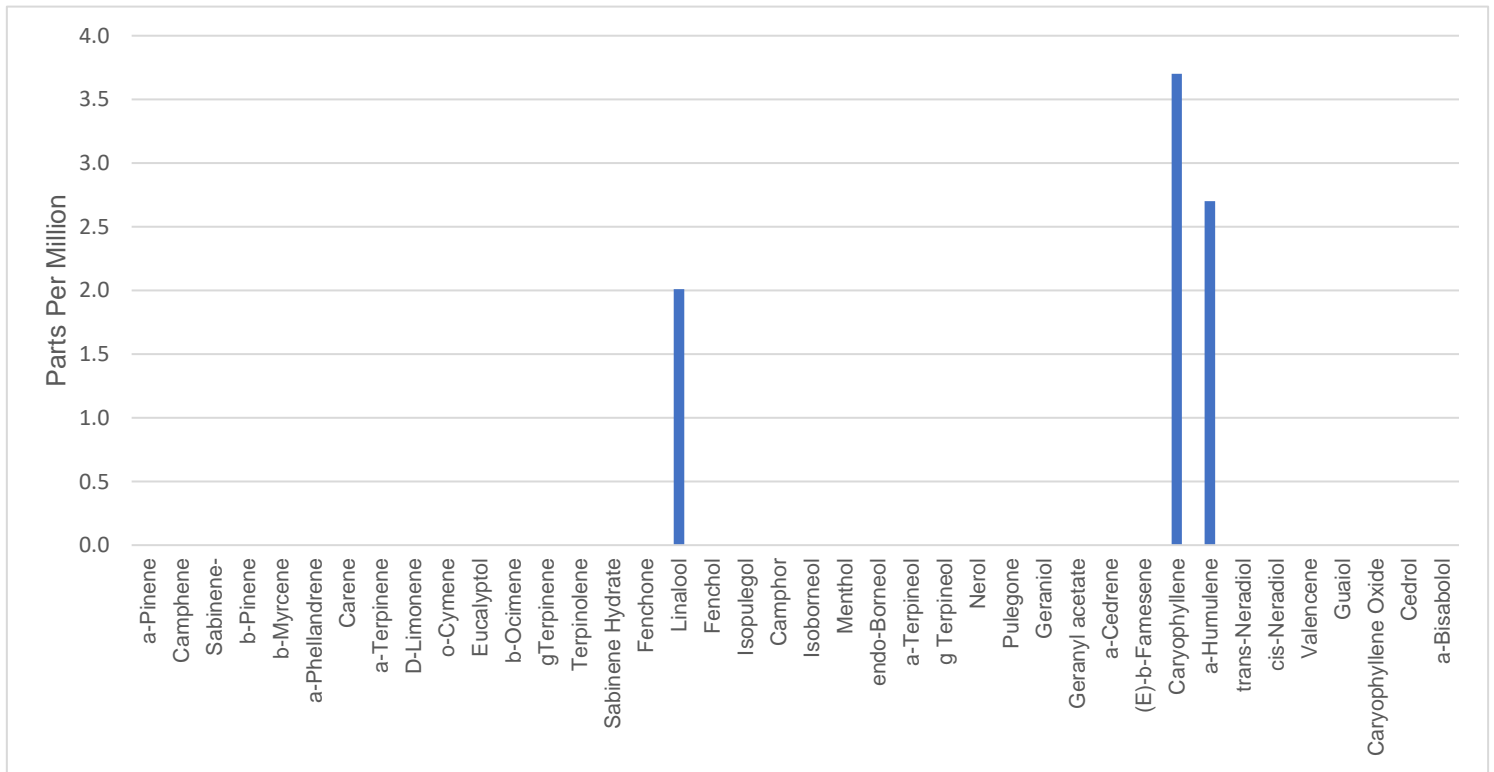
**Test Method:** C6198 LCMSMS (Internal); LOQ = 0.005%



**Batch ID:** 001CBD120

**Parameter:** Terpene Profile

**Test Method:** C5933 GCMS (Internal); Static Headspace; LOQ = 2 ppm



**Approved By:**



**Representative:** Keith Griswold, MS

**Title:** Chief Scientific Officer

**Date:** 11-Jun-20



# Certificate of Analysis

## Product Specifications

**Batch ID:** 001CBD120      **Parameter:** Residual Solvents  
**Test Method:** C5923 GCMS (Internal); Static Headspace

Analyte	Units	Reporting Limit	MRL (USP 467)	Result*	Status
Methanol	%w/w	0.05	0.30	< 0.05	PASS
Pentane	%w/w	0.003	0.50	< 0.003	PASS
Ethanol	%w/w	0.05	0.50	<0.05	PASS
Acetone	%w/w	0.05	0.50	< 0.05	PASS
Isopropanol	%w/w	0.05	0.50	<0.05	PASS
Acetonitrile	%w/w	0.003	0.04	<0.003	PASS
n-Hexane	%w/w	0.003	0.03	<0.003	PASS
Tetrahydrofuran	%w/w	0.003	0.07	<0.003	PASS
Chloroform	%w/w	0.003	0.01	<0.003	PASS
n-Heptane	%w/w	0.02	0.50	<0.02	PASS
Toluene	%w/w	0.003	0.09	<0.003	PASS
m & p Xylene	%w/w	0.003	0.22	<0.003	PASS

**Batch ID:** 001CBD120      **Parameter:** Mycotoxins  
**Test Method:** MCR-TM-0013 LCMSMS

Analytes	Units	Reporting Limit	Action Limit	Results*	Status
Mycotoxins	ppb	n/a	20	< 20	PASS

**Batch ID:** W1807100X1765      **Parameter:** Pesticides  
**Test Method:** MCR-TM-0009 LCMSMS

Analyte	Units	Reporting Limit	Action Limit	Results*	Status
Bifenazate	ppm	0.50	0.20	Non Detect	PASS
Etoxale	ppm	0.24	0.20	Nondetect	PASS
Imazalil	ppm	0.04	0.20	Non detect	PASS
Imidacloprid	ppm	0.01	0.40	Non detect	PASS
Myclobutanil	ppm	0.02	0.20	Nondetect	PASS
Spiromesifen	ppm	0.40	0.20	Non detect	PASS
Trifloxystrobin	ppm	0.05	0.20	Non detect	PASS
Bifenthrin	ppm	0.16	0.05	Non detect	PASS
Cyfluthrin		6.00	0.05	Non detect	PASS

*Reporting limit for all mycotoxins screened is 2 parts per billion (ppb); MRL - maximum residual limit allowed by EPA/Orgeon Regulations*

**Batch ID:** 001CBD120      **Parameter:** Heavy Metals  
**Test Method:** MCR-TM-0008 ICPMS

Analyte	Units	Reporting Limit	Action Limit	Results*	Status
As	ppb	42.8	200	Non Detect	PASS
Hg	ppb	37.1	100	Nondetect	PASS
Cd	ppb	27.5	200	Non detect	PASS
Pb	ppb	23.1	500	Non detect	PASS

*\*Results representative of testing performed on hemp concentrate prior to formulation*

**Approved By:**



**Representative:** Keith Griswold, MS

**Title:** Chief Scientific Officer

**Date:** 11-Jun-20



**Product:** Buddy System 240  
**Description:** Full spectrum whole plant CBD infused coffee beans  
**Unit Size:** 12 oz  
**Serving Size:** 8 oz Cup of Coffee

**Harvest Source:** Vermont, USA  
**Cultivar:** Blend  
**Batch ID:** 001CBD240

Quality	Method	Specification	Result	
<b>Total CBD:</b>	C5210-HPLCUV (Internal)	> 240 MG	<b>262</b>	PASS
<b>Total THC:</b>	C5210-HPLCUV (Internal)	< 0.3 %	<b>&lt;0.05</b>	PASS
<b>Appearance:</b>	ASTM E1627 - 11	Coffee Beans		PASS
<b>Odor:</b>	ASTM E1627 - 11	Aromatic, rich		PASS
<b>Total Terpenes:</b>	C5933-GCMS (Internal)	Detectable (PPM)	15	PASS
<b>Minor Cannabinoid</b>	C6198 LCMSMS (Internal)	Detectable (MG)	12	PASS
Safety	Method	Specification	Result	
<b>Water Activity</b>	D8196-18	Not Tested		
<b>Solvents:</b>	C5923-GCMS (Internal)	USP 467		PASS
<b>Pesticides:</b>	MCR-TM-0009 LCMSMS	MDH Exhibit 5		PASS
<b>Mycotoxins:</b>	MCR-TM-0013 LCMSMS	MDH Exhibit 6		PASS
<b>Heavy Metals:</b>	MCR-TM-0008 ICPMS	MDH Exhibit 4		PASS

Product of Vermont USA



Test Method: C5210 HPLC-UV (Internal)

Test Method: C5210 HPLC-UV (Internal)

Terpene Profile	Parts Per Million	Parts Per Million	Cannabinoid Potency	MG Per Unit	MG Per Serving	
a-Pinene	<2	Isoborneol	<2	CBD	261.9	11.91
Camphene	<2	Menthol	<2	CBDA	<50	<1
Sabinene-	<2	endo-Borneol	<2	d9-THC	<50	<1
b-Pinene	<2	a-Terpeneol	<2	THCA-A	<50	<1
b-Myrcene	<2	g Terpeneol	<2	d8-THC	<1	<0.02
a-Phellandrene	<2	Nerol	<2	CBG	9.94	0.45
Carene	<2	Pulegone	<2	CBGA	<1	<0.02
a-Terpinene	<2	Geraniol	<2	CBN	<1	<0.02
D-Limonene	<2	Geranyl acetate	<2	CBNA	<1	<0.02
o-Cymene	<2	a-Cedrene	<2	CBC	2.24	0.05
Eucalyptol	<2	(E)-b-Famesene	<2	CBCA	<1	<0.02
b-Ocimene	<2	Caryophyllene	6.1	CBDV	<1	<0.02
gTerpinene	<2	a-Humulene	5.4	CBDVA	<1	<0.02
Terpinolene	<2	trans-Neradiol	<2	THCV	<1	<0.02
Sabinene Hydrate	<2	cis-Neradiol	<2	THCVA	<1	<0.02
Fenchone	<2	Valencene	<2	CBL	<1	<0.02
Linalool	3.2	Guaiol	<2			
Fenchol	<2	Caryophyllene Oxide	<2			
Isopulegol	<2	Cedrol	<2			
Camphor	<2	a-Bisabolol	<2			

**Recommended Storage:** See product packaging  
**Retest Date (CBD Potency):** 1-Apr-20  
**Product Information:** See product panel for details.

Approved By:



Representative: Keith Griswold, MS

Title: Chief Scientific Officer

Date: 11-Jun-20

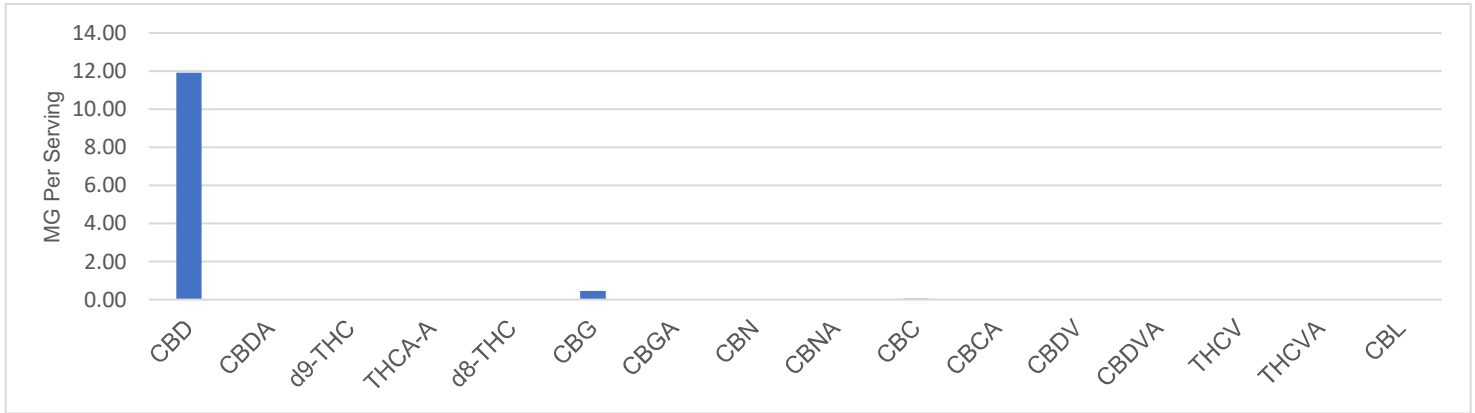


Data reported in this document pertains only to this batch and as sampled according to QMT.PLN.01.03. All rights are reserved to the producer and distributor of this product. Unauthorized reproduction of this data is prohibited. All testing is performed with internally developed test methods that have been verified or validated in accordance to AOAC and ICH guidelines. Test method performance is monitored through control charting.

**Batch ID:** 001CBD240

**Parameter:** Cannabinoid Potency

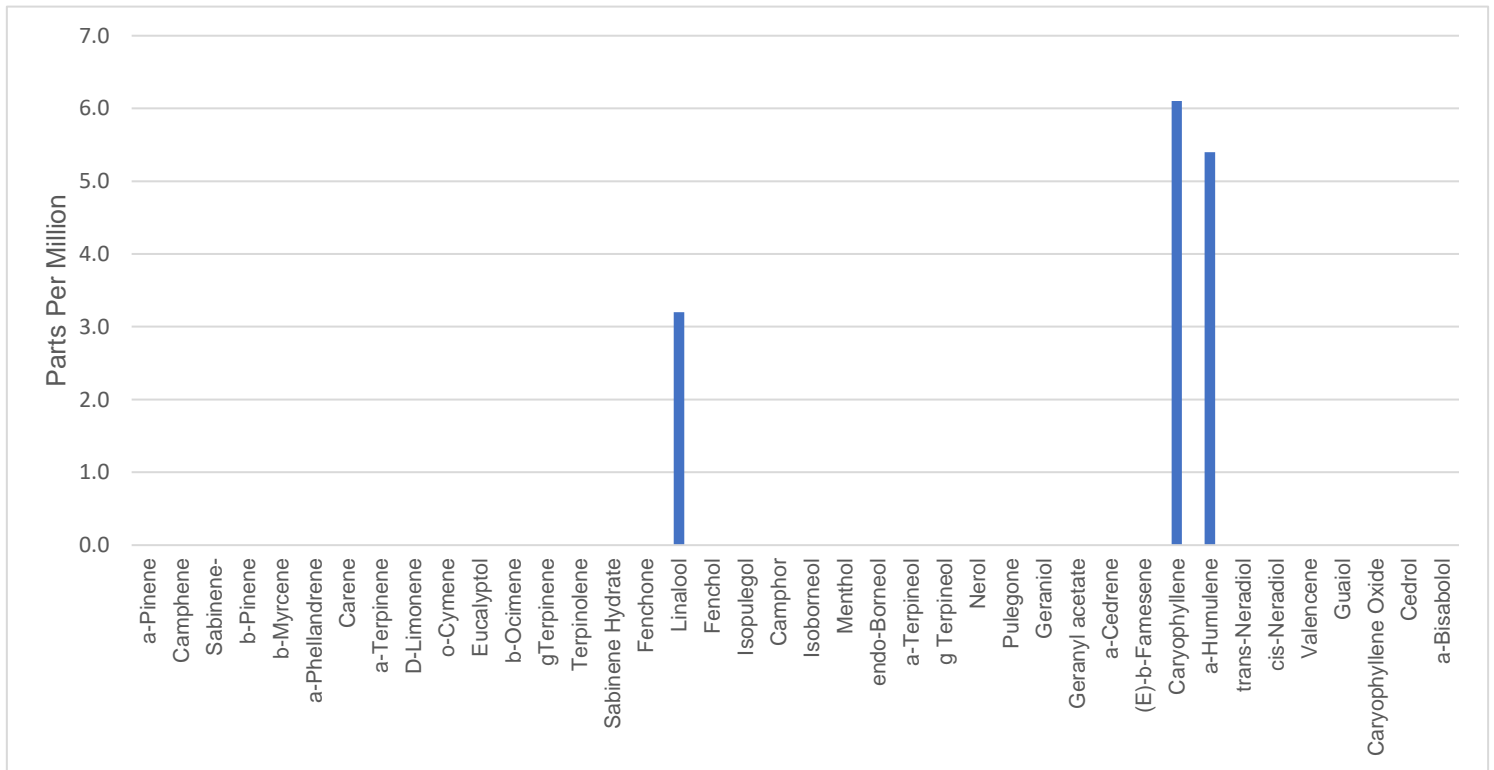
**Test Method:** C6198 LCMSMS (Internal); LOQ = 0.005%



**Batch ID:** 001CBD240

**Parameter:** Terpene Profile

**Test Method:** C5933 GCMS (Internal); Static Headspace; LOQ = 2 ppm



**Approved By:**



**Representative:** Keith Griswold, MS

**Title:** Chief Scientific Officer

**Date:** 11-Jun-20



# Certificate of Analysis

## Product Specifications

**Batch ID:** 001CBD240      **Parameter:** Residual Solvents  
**Test Method:** C5923 GCMS (Internal); Static Headspace

Analyte	Units	Reporting Limit	MRL (USP 467)	Result*	Status
Methanol	%w/w	0.05	0.30	< 0.05	PASS
Pentane	%w/w	0.003	0.50	< 0.003	PASS
Ethanol	%w/w	0.05	0.50	<0.05	PASS
Acetone	%w/w	0.05	0.50	< 0.05	PASS
Isopropanol	%w/w	0.05	0.50	<0.05	PASS
Acetonitrile	%w/w	0.003	0.04	<0.003	PASS
n-Hexane	%w/w	0.003	0.03	<0.003	PASS
Tetrahydrofuran	%w/w	0.003	0.07	<0.003	PASS
Chloroform	%w/w	0.003	0.01	<0.003	PASS
n-Heptane	%w/w	0.02	0.50	<0.02	PASS
Toluene	%w/w	0.003	0.09	<0.003	PASS
m & p Xylene	%w/w	0.003	0.22	<0.003	PASS

**Batch ID:** 001CBD240      **Parameter:** Mycotoxins  
**Test Method:** MCR-TM-0013 LCMSMS

Analytes	Units	Reporting Limit	Action Limit	Results*	Status
Mycotoxins	ppb	n/a	20	< 20	PASS

**Batch ID:** W1807100X1765      **Parameter:** Pesticides  
**Test Method:** MCR-TM-0009 LCMSMS

Analyte	Units	Reporting Limit	Action Limit	Results*	Status
Bifenazate	ppm	0.50	0.20	Non Detect	PASS
Etoxale	ppm	0.24	0.20	Nondetect	PASS
Imazalil	ppm	0.04	0.20	Non detect	PASS
Imidacloprid	ppm	0.01	0.40	Non detect	PASS
Myclobutanil	ppm	0.02	0.20	Nondetect	PASS
Spiromesifen	ppm	0.40	0.20	Non detect	PASS
Trifloxystrobin	ppm	0.05	0.20	Non detect	PASS
Bifenthrin	ppm	0.16	0.05	Non detect	PASS
Cyfluthrin		6.00	0.05	Non detect	PASS

*Reporting limit for all mycotoxins screened is 2 parts per billion (ppb); MRL - maximum residual limit allowed by EPA/Orgeon Regulations*

**Batch ID:** 001CBD240      **Parameter:** Heavy Metals  
**Test Method:** MCR-TM-0008 ICPMS

Analyte	Units	Reporting Limit	Action Limit	Results*	Status
As	ppb	42.8	200	Non Detect	PASS
Hg	ppb	37.1	100	Nondetect	PASS
Cd	ppb	27.5	200	Non detect	PASS
Pb	ppb	23.1	500	Non detect	PASS

*\*Results representative of testing performed on hemp concentrate prior to formulation*

**Approved By:**



**Representative:** Keith Griswold, MS

**Title:** Chief Scientific Officer

**Date:** 11-Jun-20

